

A SELECTION FROM THE VAST RANGE OF

ClarkeTM

QUALITY PRODUCTS

AIR COMPRESSORS

From DIY to industrial. Plus air tools, spray guns and accessories.

GENERATORS

Prime duty or emergency standby for business, home and leisure.

POWER WASHERS

Hot and cold, electric and engine driven - we have what you need.

WELDERS

Mig, Arc, Tig and Spot. From DIY to auto/industrial.

METALWORKING

Drills, grinders and saws for DIY and professional use.

WOODWORKING

Saws, sanders, lathes, mortisers and dust extraction.

HYDRAULICS

Cranes, body repair kits, transmission jacks for all types of workshop use.

WATER PUMPS

Submersible, electric and engine driven for DIY, agriculture and industry.

POWER TOOLS

Angle grinders, cordless drill sets, saws and sanders.

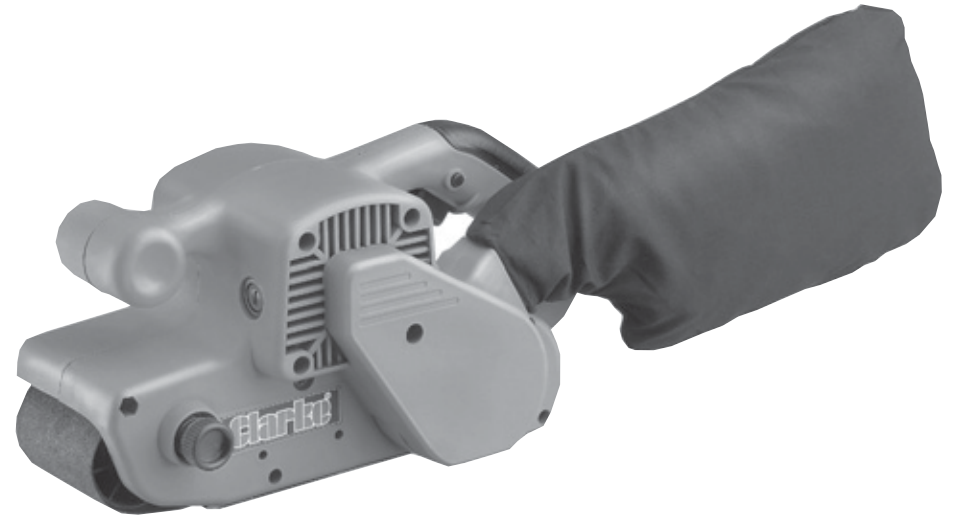
STARTER/CHARGERS

All sizes for car & commercial use.



Clarke[®]

WOODWORKER



BELT SANDER

MODEL No. BS1

Part No. 6462050

OPERATING & MAINTENANCE INSTRUCTIONS

Clarke INTERNATIONAL

For spare parts and servicing, please contact your nearest dealer, or Clarke International on

020 - 8988 - 7400

e-mail: Parts@clarkeinternational.com e-mail: Service@clarkeinternational.com



Thank you for selecting this CLARKE Hand Held Belt Sander, which is designed for DIY use, and for sanding WOOD ONLY only.

Before attempting to use the machine, please read this leaflet thoroughly and follow the instructions carefully. In doing so you will ensure the safety of yourself and that of others around you, and you can look forward to the Sander giving you long and satisfactory service.

GUARANTEE

This product is guaranteed against faulty manufacture for a period of 12 months from the date of purchase. Please keep your receipt therefore, as proof of purchase.

This guarantee is invalid if the product is found to have been abused or tampered with in any way, or not used for the purpose for which it was intended.

Faulty goods should be returned to their place of purchase, no product can be returned to us without prior permission.

This guarantee does not effect your statutory rights. Please note that backing pad is not covered by this warranty.

SPECIFICATIONS

Elec. Supply	230V 50Hz 1ph
Power Rating	900 Watts
Fuse Rating	13 Amps
No Load Speed	380 M/min
Belt Size	76x533mm
Sound Power Level	106dBLWA
Vibration Level	>2.5m/S ²
Weight	3.7kg



This product conforms with the following directives:
98/37/EC, 73/23/EEC and 89/336/EEC

Please note that the details and specifications contained herein, are correct at the time of going to print. However, CLARKE International reserve the right to change specifications at any time without prior notice.

PARTS & SERVICE

For Spare Parts and Service, please contact your nearest dealer, or CLARKE International, on one of the following numbers.

PARTS & SERVICE TEL: 020 8988 7400

PARTS & SERVICE FAX: 020 8558 3622

or e-mail as follows:

PARTS: Parts@clarkeinternational.com

SERVICE: Service@clarkeinternational.com

TROUBLE SHOOTING

Sander is overheating

This indicates the machine is dirty. Clean the ventilation holes, and blow out with compressed air or a clean dry cloth.

Overloading the machine will also cause overheating. Do not use for heavy duty work, and do not apply excessive pressure.

Excessive sparking occurs

This indicates worn brushes. This problem is quickly remedied but you should consult your CLARKE dealer for parts and advice.

Sander does not operate when switched ON

Check to ensure the fuse is sound, and replace if necessary. If the fuse is sound, or the blows repeatedly, consult your CLARKE dealer.

ACCESSORIES

The following sanding belts are available from your Clarke dealer.

40 Grit, pack of 10 Part No. 6468040

60 Grit pack of 10 Part No. 6468042

80 Grit pack of 10 Part No. 6468044

120 Grit pack of 10 Part No. 6468046

PARTS LIST

Item	Description	Part No.
1	Dust Collector Bag	TMCBS101
2	Motor Brushes	TMCBS102

OPERATION

With the mains cable disconnected from the mains supply, select the abrasive belt appropriate for the job in hand, and attach it to the machine as follows:

Pull out the Belt Tension Lever fully, in the manner shown in Fig. 1. This will allow the belt to be slipped over the front and rear rollers. Centralise the belt, then gently release the Tensioning lever...under control...do not allow it to spring back.

Attach the dust collection bag to the orifice at the rear of the tool, by pressing the lugs at the neck of the bag together, so that the wire clamp may be fitted over the neck of the orifice.

The ON/OFF trigger switch is located under the grip.

DO NOT plug in to the mains, unless you have ensured the tool is switched OFF. To do this, pull the switch fully upwards, and then release it.

To switch the machine ON, pull the trigger switch, and hold in position by pushing the button on the side of the grip. To release the switch lock, and switch OFF, pull the trigger switch a second time.

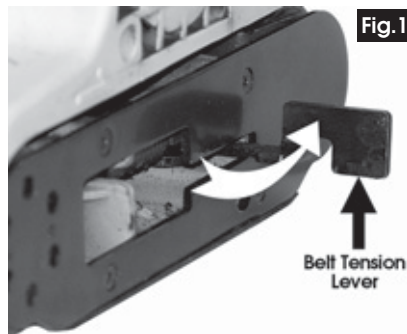


Fig.1

Belt Tracking

It is essential that the belt runs true between the rollers otherwise it will have the tendency to run off.

A Tracking adjuster is provided as indicated in Fig.2. Turn the adjuster so that the front roller appears to be square, then switch ON the tool. Observe the belt, and turn the Adjuster Knob clockwise or anticlockwise to ensure the belt runs truly. Once satisfied, the tool is ready for use.



Fig.2

GENERAL HINTS FOR SANDING

Always check to ensure that the work is free of nails, or the nail heads are punched below the surface of the work, as appropriate.

Move the machine evenly and smoothly over the surface of the work, with only light pressure, evenly spread on the front hand post, and the handle. This helps to expel dust particles, and produce an even finish, and will also prolong the life of the abrasive paper. Let the machine do the work. Ensure the tool is flat on the work surface and DO NOT apply excessive downwards pressure, as this will not only produce an uneven finish, but will overload the motor, and therefore the possibility of motor failure.

MAINTENANCE

Always inspect the machine before use, and ensure it is in top condition.

Ensure all air vents are clear, (use compressed air to clean the machine where possible).

Check the cable to ensure it is sound and free from cracks, bare wires etc.

Motor Brush Renewal (Fig.2)

Unscrew and remove the Brush caps, withdraw the brush assemblies and replace with new ones.

SAFETY PRECAUTIONS



WARNING:

As with all machinery, there are certain hazards involved with their operation and use. Exercising respect and caution will considerably lessen the risk of personal injury. However, if normal safety precautions are overlooked or ignored, personal injury to the operator or damage to property, may result.

1. **ALWAYS** Learn the machines' applications, limitations and the specific potential hazards peculiar to it. Read and become familiar with the entire operating manual.
2. **ALWAYS** use a face or dust mask. Be aware that some materials can be extremely toxic...take all necessary precautions.
3. **ALWAYS** check for damage before using the machine, any damaged part, should be checked to ensure that it will operate properly, and perform its intended function. Check for alignment of moving parts, breakage of parts, mountings, and any other condition that may affect the machines' operation. Any damage should be properly repaired or the part replaced. If in doubt, **DO NOT** use the machine. Consult your local dealer.
4. **ALWAYS** disconnect the tool/machine from the power supply before servicing and when changing accessories.
5. **ALWAYS** wear safety goggles, manufactured to the latest European Safety Standards. Everyday eyeglasses do not have impact resistant lenses, they are not safety glasses.
6. **ALWAYS** keep work area clean cluttered areas and benches invite accidents.
7. **ALWAYS** ensure that adequate lighting is available. A minimum intensity of 300 lux should be provided. Ensure that lighting is placed so that you will not be working in your own shadow.
8. **ALWAYS** keep children away. All visitors should be kept a safe distance from the work area, especially whilst operating the machine.
9. **ALWAYS** maintain machine in top condition. Keep tools/machines clean for the best and safest performance. Follow maintenance instructions.
10. **ALWAYS** handle with extreme care do not carry the tool/machine by its' electric cable, or yank the cable to disconnect it from the power supply.
11. **ALWAYS** ensure the switch is off before plugging in to mains. Avoid accidental starting.
12. **ALWAYS** concentrate on the job in hand, no matter how trivial it may seem. Be aware that accidents are caused by carelessness due to familiarity.
13. **ALWAYS** keep your proper footing and balance at all times - don't overreach. For best footing, wear rubber soled footwear. Keep floor clear of oil, scrap wood, etc.



14. **ALWAYS** wear proper apparel. Loose clothing or jewellery may get caught in moving parts. Wear protective hair covering to contain long hair.
15. **ALWAYS** use recommended accessories. The use of improper accessories could be hazardous.
16. **ALWAYS** remove plug from electrical outlet when adjusting, changing parts, or working on the machine.
17. **NEVER** operate machine while under the influence of drugs, alcohol or any medication.
18. **NEVER** leave machine running unattended. Turn power off. Do not leave the machine until it comes to a complete stop.
19. **NEVER** force the machine. It will do a better and safer job at the rate for which it was designed.
20. **NEVER** use power tools in damp or wet locations or expose them to rain. Keep your work area well illuminated. Do not use in explosive atmosphere (around paint, flammable liquids etc.). Avoid dangerous environment.



ADDITIONAL PRECAUTIONS FOR BELT SANDERS

1. Always wear ear protectors/defenders, as the noise level of this machine can exceed 85dB (A).
2. Ensure the Dust Collection Bag is attached before use. Empty dust frequently.
3. Do not use the machine if the electric cable, plug or the motor, is in poor condition.
4. Keep the mains cable well away from the sander, and ensure an adequate electrical supply is close at hand so that the operation is not restricted by the length of the cable.
5. Switch the machine OFF immediately the task is completed.
6. Never allow the ventilation slots in the machine to become blocked.
7. Always use the appropriate sanding medium for the material being worked. Wood sanding media of various grades is available from your Clarke dealer, (see accessories)
8. Do not attempt any electrical repair yourself. Consult a qualified electrician, or our Service Dep't on **020 8988 7400**

Additionally, please keep these instructions in a safe place for future reference.

Clarke
INTERNATIONAL

ELECTRICAL CONNECTIONS

This product is provided with a standard 13 amp, 230 volt (50Hz), BS 1363 plug, for connection to a standard, domestic electrical supply. Should the plug need changing at any time, ensure that a plug of identical specification is used.



This appliance is Doubly Insulated, and the two wires in the mains lead should be wired up in accordance with the following colour code:

BLUE - NEUTRAL

BROWN - LIVE

- Connect the BLUE coloured cord to the plug terminal marked a letter "N"
- Connect the BROWN coloured cord to the plug terminal marked a letter "L"

If this appliance is fitted with a plug which is moulded on to the electric cable (i.e. non-rewireable) please note:

1. The plug must be thrown away if it is cut from the electric cable. There is a danger of electric shock if it is subsequently inserted into a socket outlet.
2. Never use the plug without the fuse cover fitted.
3. Should you wish to replace a detachable fuse carrier, ensure that the correct replacement is used (as indicated by marking or colour code).
4. Replacement fuse covers can be obtained from your local dealer or most electrical stockists.

FUSE RATING

The fuse in the plug must be replaced with one of the same rating (**13 amps**) and this replacement must be ASTA approved to BS1362.

If in doubt, consult a qualified electrician. Do not attempt any electrical repairs yourself.

CABLE EXTENSION.

Do not use an extension longer than 10 metres, with the conductor size at least the same size as that on the machine.

DUST EXTRACTION

The sander is provided with a dust collection bag, which should always be in place. This does not preclude the user from wearing a face mask to prevent the inhalation of dust particles.

Although a dust collection facility is provided, due to the nature of the tool, some of the dust produced will be forced into the surrounding atmosphere, and will not be collected.